

#### 1 The FAUN air circulation system

The FAUN air circulation system continuously transports the extracted air from the debris container to the blowing nozzle behind the suction nozzle. When loaded with new debris, the already moistened and heated air is once again sucked into the suction nozzle and thereby circulated. The quantity of recirculating air can be variably adjusted between 30 and 70 % depending on the application.

Only the relatively small proportion of air which is not recirculated flows out smoothly under the machine. Fine dust emissions from the FAUN road sweeper with the air circulation system are therefore approximately 50 % lower

than for pure suction road sweepers. In addition, the VIAJET 5 does not blow dust around, because clean exhaust air is expelled behind the sweeper units on the portion of the road which is already clean.

Adding water to the blast air also enables the road to be cleaned in the working area of the suction nozzle. In winter, it can be used in temperatures reaching down to -5 °C by adding water to the suction nozzle, as the air introduced into the circuit is heated by around 15 °C and therefore prevents the water in the suction nozzle and the container from freezing.



# VIAJET 5 – Your high-performance city speedster

The VIAJET 5 combines a high usable volume with compact dimensions, making it ideal for municipal applications.

The VIAJET 5 comes with FAUN's patented air circulation system as standard, which guarantees the lowest emission values in the expelled air as well as a high suction capacity.

## FAUN drive concepts

### Hydraulic drive of the sweeping assembly

The blower and sweeper units of the road sweeper are driven by a hydraulic double pump, which is connected to the clutch-independent PTO of the chassis. The driver can freely regulate the engine speed with the accelerator pedal between 900 - 2,000 RPM to adjust the sweeping speed as necessary. The turbine power is adjusted to the available horsepower in line with demand, reducing fuel consumption. The omission of an additional auxiliary engine reduces maintenance costs and creates space for more water.

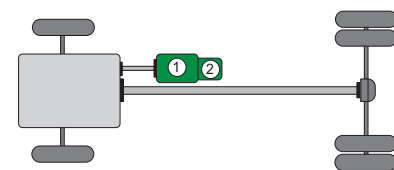
### HS 1010 hydrostatic drive

The HS 1010 hydrostatic drive acts as an interaxle differential between the transmission output and the rear axle differential.

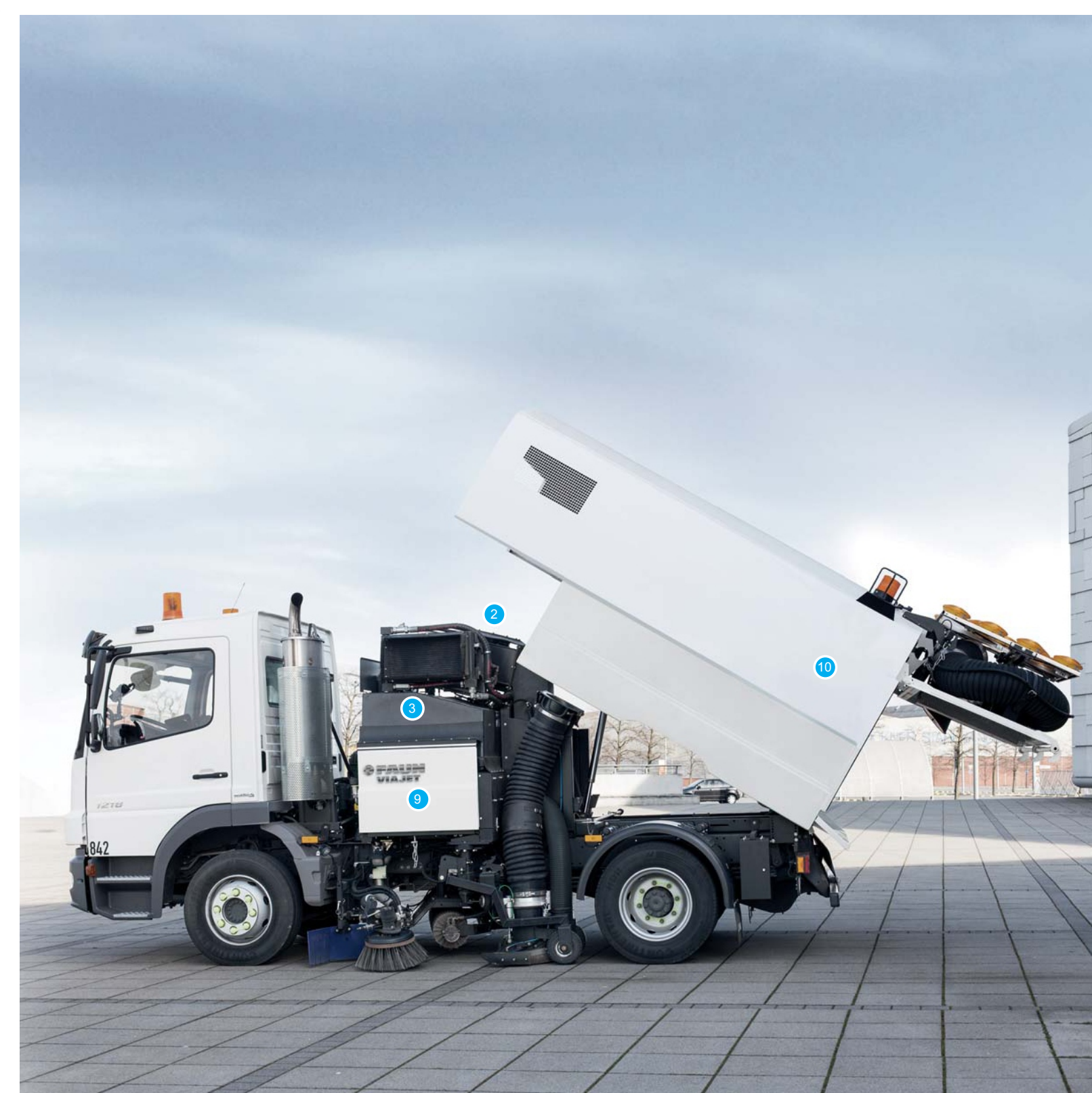
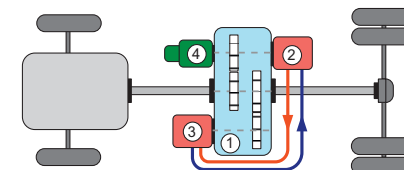
In sweeping mode, the mechanical drive train is interrupted and the power is transferred from the transmission output to a hydraulic pump. In turn, this pump drives a hydraulic motor, which transfers the power to the rear axle. The driver can use one of three programmes to adjust the drive control.

The fully hydrostatic drive also powers the entire sweeping assembly via a second hydraulic pump combination.

- 1 Suction fan pump
- 2 Working hydraulics

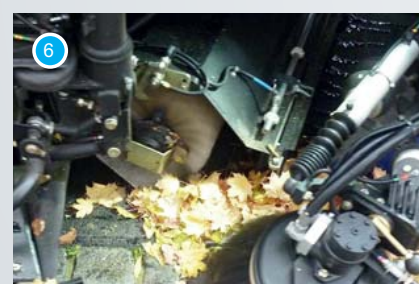


- 1 Gear box
- 2 Drive pump
- 3 Drive motor
- 4 Auxiliary pump



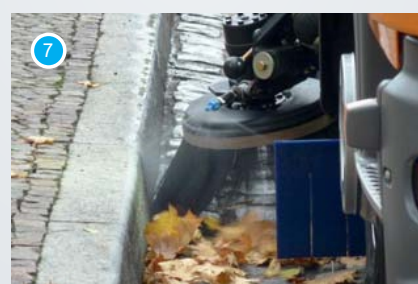
The V-shaped suction nozzle

The V-shaped suction nozzle features an optimised inflow for incredibly high suction power. The wear-resistant bulky debris flap can also cope with large objects.



The roller brush

Operating at a broad working angle to the suction nozzle, the pushed roller brush ensures that all material is fed into the suction nozzle at high speed. The automatic locking feature secures the brush during non-operational travel.



The pulled brush

The disc brush of the VIAJET 5 easily evades obstacles in its path. Thanks to its position in front of the roller brush, no debris is left behind.



Streamlined suction fan

The sloping configuration of the blower optimises the volume flow and reduces debris build-up. This improves suction capacity, enabling the vehicle to cope with even heavy sweeper material.



Ample space for water

The lightweight, glass-fibre-reinforced plastic tanks of the VIAJET 5 are entirely non-corrosive and prevent the build-up of limescale. The arrangement of the tanks lowers the centre of gravity and ensures optimum weight distribution; it also improves stability during tipping.



Various tank solutions

A range of diesel tank solutions are available, each of which is adjusted for combination with the various chassis.



The set-up box

The set-up box is designed for easy access, without needing to tip the container. The clear layout of the configuration functions makes it easy to adjust the basic settings of the sweeping systems.



The efficiently arranged control centre

As with all VIAJETs, all of the switching elements and valves of the VIAJET 5 for compressed air, hydraulic and electrical systems are easily accessible in a central position. When troubleshooting, service technicians can therefore get to the bottom of problems quickly. The dust and water-protected units simplify regular maintenance.



The large debris container

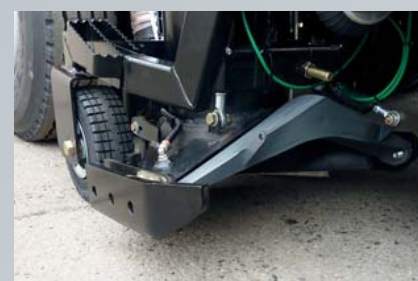
The laterally raised hopper floor made of V2A, along with the bodies steep tipping angle, ensures efficient emptying and easy cleaning. The particularly large debris container delays oversuction; even when fully loaded, the water tank is separate from the container, meaning that stability is increased during tipping.



### FAUN special applications



Floating suction nozzle



Inclined suction nozzle



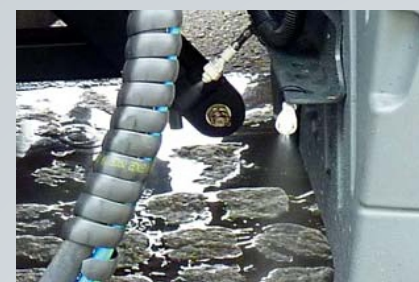
Roof arm for high-pressure lance



FLATJET behind the roller brush



Front road-cleaning system



Spray jet package



Wire rope for leaf screen



Cleaning hatch for suction channel



Manual suction hose at the rear



ROAD SWEEPERS

STREAMLINE  
GENERATION

- ⊕ High suction performance
- ⊕ Optimised aerodynamics
- ⊕ Air circulation system
- ⊕ Compact

### CITY CLASS VIAJET 5

#### WATER TANK VOLUMES

VIAJET 5 drive concept	Water as standard	Optionally upgradable with change of wheelbase
Hydraulic drive	1,100 l	Additional 600 l Additional 1,200 l
Hydrostatic drive	1,100 l	

#### DRIVE CONCEPTS

Drive versions	Body category					
	4 m³	5 m³	6 m³	7 m³	8 m³	12 m³
Auxiliary engine	x		x	x		
Hydraulic drive		x	x	x	x	
Hydrostatic drive		x	x	x	x	x

#### POWER CLASS

CITY class	Road sweeper type	
	VIAJET 4	VIAJET 5
VARIO class	VIAJET 6	VIAJET 7
POWER class	VIAJET 8	VIAJET 12



**ΛΙΝΑΡΔΟΣ ΑΝΑΡΓΥΡΟΣ**  
**8ο ΧΛΜ Ε.Ο. ΧΑΛΚΙΔΑΣ-ΒΑΣΙΛΙΚΟΥ**  
**34100 ΧΑΛΚΙΔΑ**  
**ΤΗΛ.: +30 2221074223**  
**info@linardos.gr**  
**www.linardos.gr**



RELIABLE  
PROGRESSIVE

